



- President** David Conlin
dave.jenna@msn.com
- Vice President** Robert Baran
rjb@phoenixbonsai.com
- Treasurer** Charlie Richards
richards123@q.com
- Secretary** Steven Alford
pmpdrcchef@msn.com
- Communications Officer** Robert Baran
rjb@phoenixbonsai.com

INSIDE THIS ISSUE:

- More Business Stuff 2
- 2010 Calendar of Events 3&4
- Club Achieves 4

Please be aware that our club's newsletters are now archived on-line -- Google (and Bookmark!) "Pikes Peak Bonsai" and on the left side click on "Newsletter". While there, also check out the link to see some 70 other Bonsai Club Newsletters On-line from around the world.

THIS MONTH'S MEETING:
DECEMBER 12TH
@ SENIOR CENTER
THEN OFF TO LUNCH!

NEXT MONTH'S MEETING:
JANUARY 9TH
@ SENIOR CENTER
DISCUSSION ON POTS

2010 BOARD OF DIRECTORS

At our November 9th meeting we did things a little different than we have done in the past.

It was felt by our president, David Conlin, that it would make life a lot easier for the incoming new Board members if they had a month to prepare before officially taking the reins on January 1st.

So, instead of having the election in December we, as a club, voted to have the election at the November 9th meeting. This way, the new board has the opportunity to brainstorm with the old board before taking office. So, in the future, the Nominations Committee will be appointed in September, they will inform us of their choices in October and we will vote in November of every other year. (See below).

Another thing that was brought up at the meeting by David is that when the board has only a

one year term, it is difficult to plan on the future of the club, as there will be a new board coming in in one year and they may not have the same ideas as

David Conlin will be our President, Robert Baran Vice-president, Charlie Richards Treasurer and Steve Alford Secretary.



With all the discussion that we were having that were club related and not workshop related, this brought up another discussion about using too much club time for business "stuff". This has always been an issue in the past and has never been quite resolved—until now.

It was decided and voted on by the members that the Executive Board will have quarterly board meetings (4 times a year) outside the regular meeting place. These meetings will coincide with monthly events so that the timing will be right for the discussions that need to take place. These meetings will be held on December 5th, 2009, February 6th, 2010

the previous board. So it was voted on by the members to extend the term of the Executive Board to two years.

The election was held and it was voted by the members that the same Board members continue for another term. That new term being for two years until November of 2011. So

(Continued on page 2)

MEMBERSHIP DUES ARE DUE

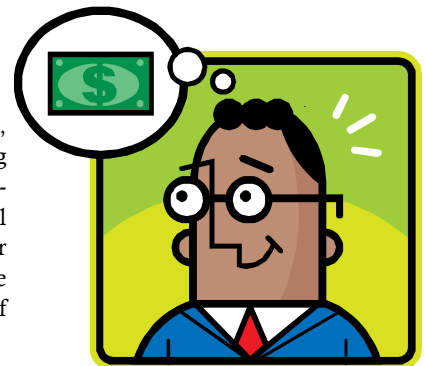
It is that time of year again, time to help refill the coffers!!

Every January our membership dues come due. If you are a regular member your dues are \$25 and if you are a couple or family then your dues are \$35.

You can bring cash or check to the next meeting or you can **make your check payable to: Pikes Peak Bonsai Society and mail it to our Treasurer at:**

Charlie Richards
10735 Double D Road
Fountain, CO 80817

As of December, 2009, Steve Alford will be taking over the duties of Membership Director. He will be keeping track of our member list but Charlie will still be taking care of the money end of things.



MORE IMPORTANT BUSINESS STUFF!!

(Continued from page 1)

June 5th, 2010 September 4th, 2010 and December 4th of 2010 and they will hereby be noted as OBM—Outside Board Meetings. They more than likely will be held at a board members home. The first one of December 5th, 2009, was held at the home of Steve Alford and Sonya Alford.

It is hoped that in this way we will not burden the members with the boring stuff and have more time for the “good stuff”. We will still be taking a few minutes of the regular monthly meeting to discuss important business issues such as Treasurer’s Report, old business, new business, etc.

As I mentioned, there was a lot covered at the November meeting. One of the most important things discussed was the financial state of the Senior Center. Mindy, the director of the Senior Center, dropped by for a few minutes and gave us the lowdown on what is going to happen now th at the city did not get the tax increase on the November ballot.

We are safe for the month of December, so we are still scheduled to have a brief meeting and then we are going to a restaurant to be determined, for our annual Christmas Luncheon.

Now for the bad news. The Center is lucky enough to have two great endowments. One is from Mr. Smith for \$1,000,000. This is to be used for maintenance of the facility, only. The other endowment is for \$400,000 and is to be used for programming and classes, only. That leaves a big hole in the yearly budget to pay other things, like salaries. They have no choice but to start charging for the use of the facility.

So, starting in January 2010, we will have to pay \$30 per hour for the use of the room. If we use the room for three hours, they will give us one hour free. So for three hours of meeting time (starting at 10:00 AM and ending at 12:00 PM with a half

hour before and after for setup and cleanup) they will be charging us \$60 for the meeting.

This managed to spark quite a discussion from several members, including myself, on the issue of money and whether the club could afford the \$60 per month (not to mention the \$3 per month per locker that we already pay). In short, we decided that there is no way that the club could afford this at this time. But since the Senior Center has been very good to us and they are deserving of the money, it was decided that this was one of the discussions the new board needed to have at their first outside board meeting (OBM) on December 5th. At this meeting, it was decided by the board that as part of our 2010 calendar of events, we will be having four of our meetings at the Senior Center (see the article on this years calendar). This will cost us \$240 for the year, plus the \$72 per year for the lockers, for a total of \$312.

You guessed it. This sparked another discussion on the state of the club coffers. Now you understand how a simple club meeting ends up to be like a Whitehouse Press Conference.

It was suggested by yours truly that we need a Fundraising Committee. So I have volunteered, along with Timmie Stewart, Charlie Richards and Gary Gunther, to discover different methods that the club can raise money. Then maybe we can afford to have our meetings at the Center without fear of going bankrupt.

Cliff Broyles is stepping down as the creator of our annual Yearbook; the book that has everyone’s name and address and all the other great information on Bonsai. Cliff Broyles has been doing a beautiful job over the years of producing one heck of a Club Yearbook. We appreciate what you have done Cliff and your work will be greatly missed. I just hope the person that is dumb enough to try to follow in your footsteps can do as good a job, oh wait, that’s me

isn’t it?? I volunteered to take that one on too, didn’t I?? Hey Cliff, where do you keep your Tylenol?? Actually gang, I look forward to trying to produce as good a document as Cliff did. We have also created a Yearbook Committee and I will be getting the help of Robert Baran on the Yearbook. It should be in your hands at the January 9th meeting.

As I mentioned above, we now have a fundraising committee and one of the things we will be doing to raise money is to start putting sponsor adds in the annual Yearbook. If you know of anyone, or yourself, that would like to put a full or half page ad in the Yearbook, let me know.

Now, speaking of membership, it was noted at the first OBM that in the bylaws it states that the Secretary, that’s me, is also supposed to be the person in charge of Membership. So it was decided at the OBM that I will now be taking care of that. It will be easier for me since I am doing the Yearbook and it will also make life easier for Charlie so he can devote his time to the treasury. Charlie will still be in charge of collecting membership fees so that he can be the person to deposit them in the bank.

At the first OBM it was also decided that we would review and make any changes that are necessary to our bylaws. These bylaws were originally outlined in 1987 and to our knowledge have not be reviewed since. There are many articles in these bylaws that have not been followed to the letter, as they should. So the Board will make changes and then present them to the members for their approval.

And the last thing covered at the OBM was the creation of an audit committee. Our President, as per our bylaws, will appoint a committee to meet sometime in the very near future to audit the club accounts. This is something that should have been done every year and will be done every year from now on.

Be sure to come to the next meeting, December 12th, we will be going to a local restaurant for our annual Christmas Luncheon.. We will meet at the Senior Center, have a very short meeting, decide on a restaurant and go EAT!!! See you all there!

We are planning to have a gift exchange, so if you would like to take part, bring a gift with a value of no more than \$15, bonsai related or not.

CALENDAR OF EVENTS FOR 2010

SATURDAY, JANUARY 9, 2010

Bonsai pots at Senior Center: what can they be, why are they, which look best for the different types of trees, examples of.
Dues are due for 2010 club year. Yearbooks available for paid-up members.
Raffle/auction.

SATURDAY, FEBRUARY 13, 2010

Hands-on bonsai pot making at Senior Center. \$5 fee per person.
Using club-supplied clay, members can make any size/style/shape they want.
The pots will be fired later and then be available for pick-up at April's meeting.
Raffle/auction.

FRIDAY-SUNDAY, MARCH 12-14, 2010

Club participation in Spencer's Spring Garden Show at the downtown location, 1430 S. Tejon St., in lieu of a regular meeting.
Demo by Dave Conlin. More details to follow...

SATURDAY, APRIL 10, 2010

Bonsai soil and root pruning and repotting demonstration at the Senior Center.
February's hand-made pots ready for pick-up.
Raffle/auction.

APRIL 15-MAY 31, 2010

Forest tree (and shrub: cinquefoil, kinnikinnick, buffalo berry, woods rose, & common juniper) collecting season.
Details on how and where to get permits for upcoming collecting trips to the Pike National Forest can be found here:
<http://www.fs.fed.us/r2/psicc/sopa/transplants.shtml> or call 719-836-2031.

Either way, you'll need to send a check or money order for \$10 per tree (up to 10 trees per individual per year) to:

Transplants
USDA Forest Service
South Park Ranger District
P.O. Box 219
Fairplay, CO 80440

TBD (April or May)

Group collecting trip to the Pikes Peak National Forest.

SATURDAY-SUNDAY, MAY 8-9, 2010

Club-conducted demonstration on pruning/styling/repotting at a location To Be Determined,
with a hands-on workshop for a modest fee on Sunday. Observers-only for the workshop are also welcome for an even more modest fee.

SATURDAY, JUNE 12, 2010

At Claudia & Jim Eley's house in Green Mountain Falls, 684-9653: collection viewing, tree collecting,
and lunch with members bringing potluck/snack/side dishes.

SATURDAY-SUNDAY, JUNE 19-20, 2010 ?

Rocky Mountain Bonsai Society annual show at the Denver Botanic Gardens.
The Pikes Peak club will have some trees also on display there, so we can caravan to Denver
with some members taking our trees up on Saturday and some others bringing the trees back on Sunday.

SATURDAY, JULY 10, 2010

Meeting at Pete Apostolas' house in Colorado Springs, 633-7084.

SATURDAY-SUNDAY, JULY, 2010

Alternate annual show date???????

SATURDAY, AUGUST 14, 2010

Building finished flat/low stands for tree display at Dave and Jenna's house in Manitou Springs, 685-1808.
For a modest fee, pre-cut pieces will be available for members to construct their own stands. Power tools will be provided.
Lunch with members bringing potluck/snack/side dishes.

SATURDAY, SEPTEMBER 11, 2010

Preparation at Steve and Sonya Alford's house for the show. Members can bring in trees to work on and be critiqued for display in the show.
(See also these [display](#) tips.)
Introduction to [Winterization](#). Nominations committee chosen.

SATURDAY-SUNDAY, SEPTEMBER, 2010 -- LOCATION AND DATE TO BE DETERMINED

Annual Pikes Peak Bonsai Society Show.

(Continued on page 4)

2010 CALENDAR OF EVENTS (CONT'D)

(Continued from page 3)

SATURDAY, OCTOBER 9, 2010

Winterizing bonsai at [Phelan Gardens?](#)
Nominations made for next two years' slate of officers.

SATURDAY, NOVEMBER 13, 2010

Tree physiology and horticulture at Senior Center: why we do what we do in bonsai.
Elections for next slate of officers. Determine location of December meeting and Holiday Luncheon.
Raffle/auction.

SATURDAY, DECEMBER 11, 2010

Annual Holiday Luncheon at location To Be Determined (restaurant or a member's home).

FROM THE CLUB ARCHIEVES

Weathering Woes: Cold Weather Bonsai Care

An article by Susan McClure

Much on North America has a far different climate from the mild regions of Japan, the home of so many fine bonsai collections. Bonsai growers in cold weather climates must use American ingenuity to keep their bonsai alive through the winter months.

Here in the Springs area we fall within zone 5b, which has a minimum temperature of -10 to -15 degrees. There are basically three ways to protect your trees in the winter; insulate the trunk and root system of the plant, protect plants in a coldframe or enclose them in a polyhouse for the coldest winter months.

It is the wind and the sun that will kill bonsai. The sun can heat up one side of a plant, usually the south, to 70 degrees while the rest is still frozen. The tragic result is sunscald and often death.

Wind is also a winter enemy of bonsai. Arctic blasts can parch a plant; death will follow if the soil is frozen.



If you own one or a few bonsai, you can shelter them in a hole, coldframe or a nest of hay bales.

Your first option is to dig a hole among the shrubs near the foundation of your house and set the bonsai on top of coarse gravel or some other material that will allow excess rain water to drain away. If the plant sits in water, its roots will rot. Fill the hole around the bonsai with straw, peat moss, leaves or mulch as insulation, but leave the foliage uncovered. The house and shrubs will help shelter the bonsai's foliage from wind and sun. Cover the entire hole, including the plant's foliage,

from December until March with burlap, which allows plenty of fresh breathing air to circulate. *Never* use plastic to cover bonsai. When the sun shines it will microwave the plants, or just as bad, warm them to the point where the plants will break dormancy too soon and sprout long, tender shoots, only to be killed by frost.



If you have a coldframe that is about 30 inches deep, you can use it to overwinter bonsai or any other plant. Or construct a makeshift coldframe with hay bales. Place plants inside the rectangle formed by the bales and fill in around the pots (up to the level of the foliage) with insulating mulch. Top the bales with old glass window frames covered with burlap from December to March.



You can also place your bonsais inside polyhouses that are made by bending metal or plastic tubing into an arch, sticking both ends into the ground and covering with milky-colored (never clear) plastic. Flaps, doors or windows on

each end of the polyhouse are left open for ventilation when needed.

The milky plastic doesn't heat up in spring like clear plastic does. If it gets too warm, the plants break dormancy in February or March.



It is a good idea to have most of your trees protected in one form or another by Thanksgiving, and have them completely covered by Christmas.

What is important is not necessarily protection from the cold, because most hardy bonsai are cold tolerant to 15 degrees below zero, but rather to allow the pots to get cold and then keep them cold. It is alternate freezing and thawing that is so damaging.

Never put bonsai in the garage for the winter. For every one bonsai that survives winter in a garage, a dozen others die.. The cement floor is the same temperature as the air; there's no insulation. Although there is no research to prove it, the carbon monoxide in the garage may kill bonsai.

Bringing a bonsai into the house when the temperature gets really bitter shocks the plant with warmth and can kill it upon return to the outdoors.

It is always a good idea to treat your bonsais with a good all-purpose fungicide to prevent rots and spots during the winter and using appropriate precautions if mice are a problem in your area.

Begin uncovering the top part of the plants around March 20. The hardy evergreens, pines, junipers and spruces are uncovered first. Follow with the deciduous plants — crabapples and elms. Maples, which are susceptible to late frosts, are the last to emerge.

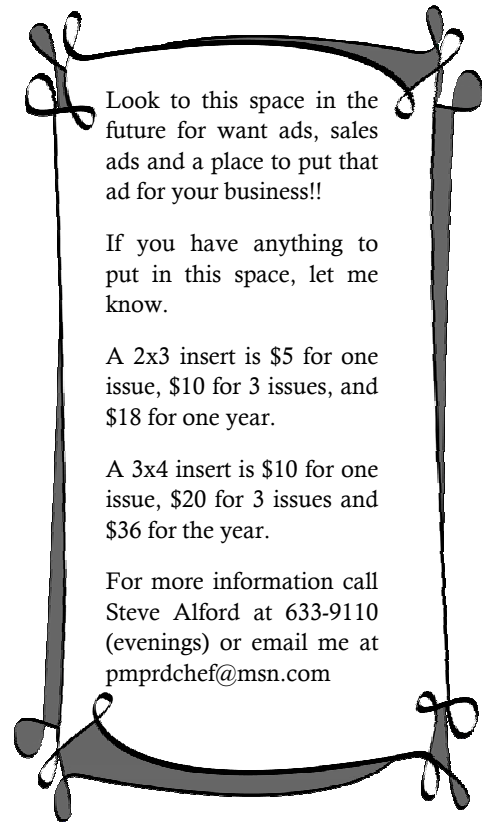




Japanese Tansu Style Bonsai Tool Chest

- Handcrafted from solid hardwoods with dovetail construction.
- Two deep drawers to store Bonsai tools.
- Attached 10" turntable.
- Two solid doors with carved Bonsai trees.
- Spacious cabinet interior with rod to hang Bonsai wire. Plenty of room for larger tools and even a few Bonsai Pots.
- Wire protrudes through holes in back for easy dispensing.
- All for \$195 (wire not included).
- Contact Steven Alford — 719-633-9110
- **Also ask to see my new Bonsai Stands!!**
- **NEW!! Club T-shirts w/logo**

A personal thanks to all those that purchased my tool chests and stands at the Springs Show and at the Denver Show. You helped make my life a lot easier. Thanks again to all of you, especially Cliff Broyles and Bill Fox.



Look to this space in the future for want ads, sales ads and a place to put that ad for your business!!

If you have anything to put in this space, let me know.

A 2x3 insert is \$5 for one issue, \$10 for 3 issues, and \$18 for one year.

A 3x4 insert is \$10 for one issue, \$20 for 3 issues and \$36 for the year.

For more information call Steve Alford at 633-9110 (evenings) or email me at pmpdchef@msn.com

Pikes Peak Bonsai Society

<http://www.phoenixbonsai.com/PikesPeakBonsai.html>

Pikes Peak Bonsai Society
 Colorado Springs Senior Center
 1514 N. Hancock Ave.
 Colorado Springs, CO 80909
 Phone: 719-385-5933

Because of the situation with the Senior Center and the \$60 monthly charge for a meeting, it is strongly recommended that you check the above referenced website to confirm the location of the meeting you wish to attend.



CLUB MEETINGS

Non-members and those curious about this art/hobby are always welcome at no obligation!

10 a.m. on the Second Saturday of each month, usually at the **Senior Center** (Ceramics Room),

1514 N. Hancock Ave. (corner of Camarillo at the top of Hancock, 1/3 mile north of Uintah St.), just northeast of downtown Colorado Springs.

(719) 385-5933